



STANDARD FEATURES

INPUT - 350ohm STRAIN GAUGE
 0.8" HIGH 5-DIGIT DISPLAY
 LED BAR GRAPHS - Process+Set Value
 0-5000psi + 0-10,000psi RANGES
 ALARM - High or Low (NO/NC 240V,5A)
 POWER - 90-260VAC
 1% ACCURACY, MANUAL ZERO
 PROCESS VALUE RETRANS - 4-20mA
 60" FLEX HOSE, 6pin BAYONET CONNECT.

OPTIONS

RETRANSMISSION OPTIONS :
 0-5, 0-10VDC or 0-20mA
 POWER - 12-24VDC
 CONNECTOR - 6pin Screw
 8pin Screw

ORDER CODE

MG-IND - P - Scale - PV Retrains - Cable Length - Connector

5M - 5,000psi	M - 4-20mA	6 - 6ft (2m)	6B - 6pin Bayonet
10M - 10,000psi	0 - 0-10mA	12 - 12ft (3.7m)	6S - 6pin Screw
Custom	1 - 0-20mA	25 - 25ft (7.7m)	8S - 8pin Screw
	5 - 0-5VDC		
	6 - 0-6VDC		
	10 - 0-10VDC		

SPECIFICATIONS - MG-IND

INPUT - PRESSURE TRANSDUCER

350ohm STRAIN GAUGE - 3.33mV/V
 EXCITATION VOLTAGE - 10VDC
 ACCURACY - 1%

RETRANS of PROCESS VALUE

CURRENT - 4-20mA, 0-10mA, 0-20mA
 VOLTAGE - 0-5, 1-5, 0-10VDC

ALARM OUTPUT

Alarms 3A/240VAC resistive.

POWER

Standard 85-265VAC 50/60Hz 10VA
 Option 24V AC/DC

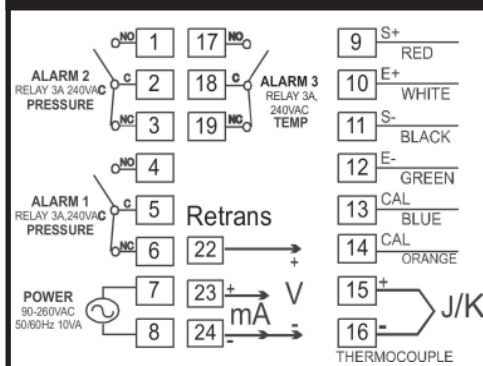
ENVIRONMENTAL

Temp&Humid. 10-55degC, 0-95%RH
 Insulation 20M ohms min@500VDC
 Weight 250-375g

MPT9610 - PRESSURE & TEMP INDICATOR ALARM - 1/4DIN



TERMINAL CONFIGURATION



STANDARD

PRESSURE TRANSDUCER INPUT
 SCALEABLE RANGE
 3 CONFIGURABLE ALARMS
 HIGH/LOW/OFF TEMP or PRESS
 AUTO or MANUAL CALIBRATION
 MANUAL ZERO
 PROCESS VALUE - RETRANS
 THERMOCOUPLE J INPUT
 LOCKOUT

ORDER CODE

MPT9610-PTRRR	RETRANS of PV	PRESSURE	TEMPERATURE
M	4-20mA	eg. 10,000psi	eg. 800°F
0	0-10mA	700bar	400°C
1	0-20mA		
5	0-5V		
6	1-5V		
10	0-10V		

SPECIFICATIONS - MPT9610

INPUTS

PRESSURE TRANSDUCER 350ohm STRAIN GAUGE,
 2.00 - 4.00mV/V, standard 3.3mV/V
 EXCIT 10VDC
 TEMPERATURE THERMOCOUPLE J
 ACCURACY +/-0.5%
 SAMPLE RATE 100ms

ALARM OUTPUTS

ALARM 1, 2, 3 5A/240VAC resistive

POWER

RATING 85 - 265 VAC 50/60Hz 10VA max

RETRANSMISSION of PRESSURE VALUE

CURRENT 4-20mA, 0-20mA, 0-10mA Max load 500 ohm
 VOLTAGE 0-10VDC, 0-5VDC, 1-5VDC Max 20mA

ENVIRONMENTAL

OPERAT TEMP -10 - 50C
 HUMIDITY 90% MAX
 INSULATION 20M ohms minimum @ 500VDC

PHYSICAL DIMENSIONS

MPT9610 96mmW x 96mmH x 100mmD
 MPT9610 Cutout 91mmW x 91mmH +/-0.5mm
 WEIGHT 300g