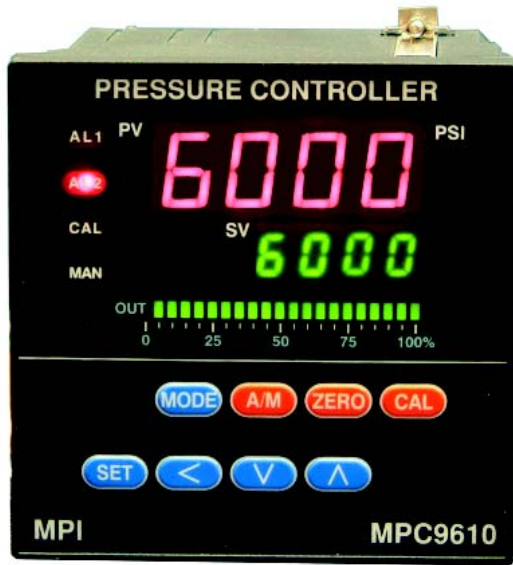


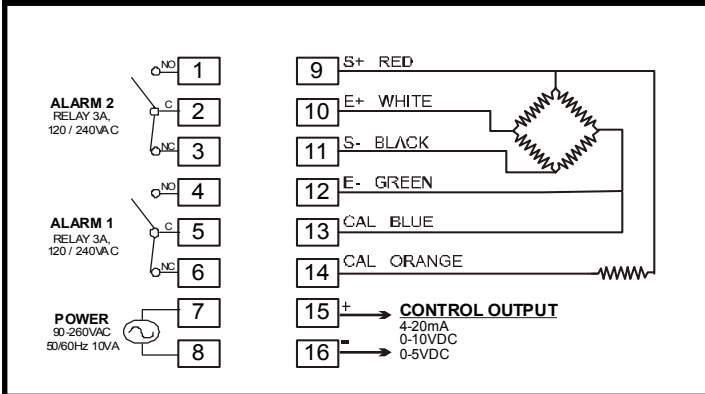
# MPC9610 - PRESSURE CONTROLLER



**STANDARD**

- 350ohm STRAIN GAGE INPUT
- AUTO / MANUAL CONTROL (BUMPLESS TRANSFER)
- FUZZY PID CONTROL OUTPUT
- SCALEABLE RANGE
- 2 CONFIGURABLE ALARMS HIGH/LOW/OFF
- AUTO or MANUAL CALIBRATION
- MANUAL ZERO
- LOCKOUT
- PROCESS VALUE - RETRANS
- FAST SAMPLING RATE - 100ms
- CONTROL RESPONSE TIME - 100ms
- AUTOMATIC RAMP-TO-SETPOINT
- OUTPUT RATE CHANGE LIMITER

**TERMINAL CONFIGURATION**



**MODEL CODE**

**MPC9610- P - CONTROL OUTPUT**

M	4-20mA
0	0-10mA
1	0-20mA
5	0-5VDC
6	1-5VDC
10	0-10VDC

## SPECIFICATIONS - MPC9610

### 1. INPUT - PRESSURE TRANSDUCER

350ohm STRAIN GAUGE      2.00 - 4.00mV/V STANDARD - 3.3mV/V  
 EXCITATION VOLTAGE      10VDC  
 ACCURACY                    +/-0.5%  
 SAMPLE RATE                100mS

### 2. CONTROL

Proportional Band          0.1-999.9 psi  
 Rest (Integral)              0-999.9 Sec.  
 Rate (Derivative)          0-999.9 Sec.  
 Anti Rest Windup          Inhibit integral action outside Proportion Band  
 Ramp Rate                    0-1000psi / minute.

### 3. OUTPUT

Current                        Isolated 0 (4) - 20 mA Max load 500 ohms.  
 Linear Volts                  1~5, 0~5, 0~10VDC. MAX 20mA

### 4. ALARM OUTPUTS

ALARM 1                      5A/240VAC resistive  
 ALARM 2                      5A/240VAC resistive

### 5. POWER

Rating                         85 - 265 VAC 50/60Hz      5VA max

### 6. ENVIRONMENTAL

Operating Temp              -10 - 50C  
 Humidity                      0- 90%  
 Insulation                      20M ohms minimum @ 500VDC

### 7. PHYSICAL DIMENSIONS

MPC9610                      96mmW x 96mmH x 100mmD  
 MPC9610 Cutout              91mmW x 91mmH +/-0.5mm  
 WEIGHT                        300g